

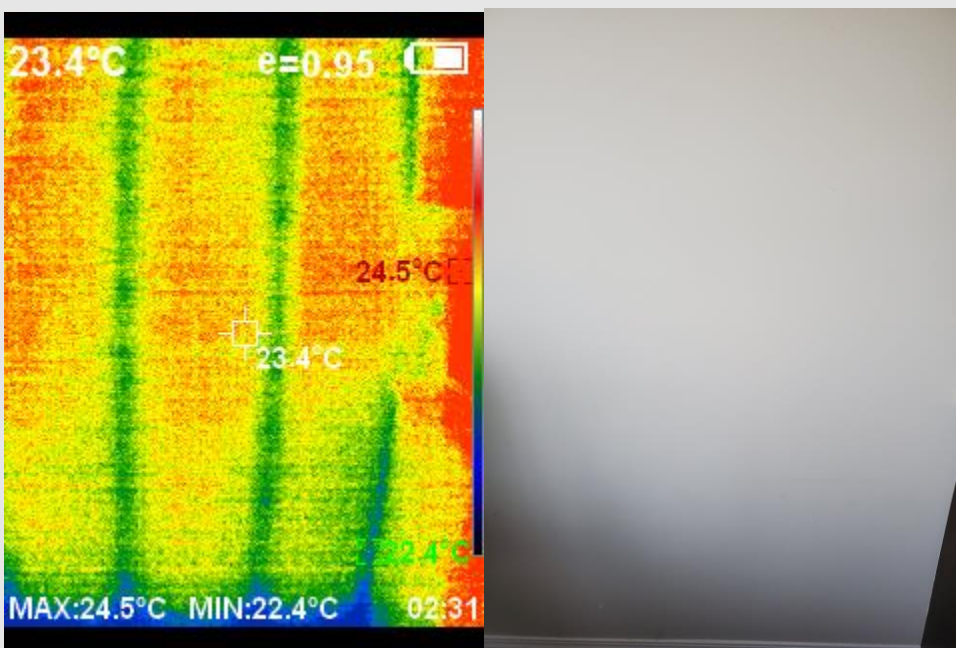


**Companion Home Inspections**  
You've made the right decision

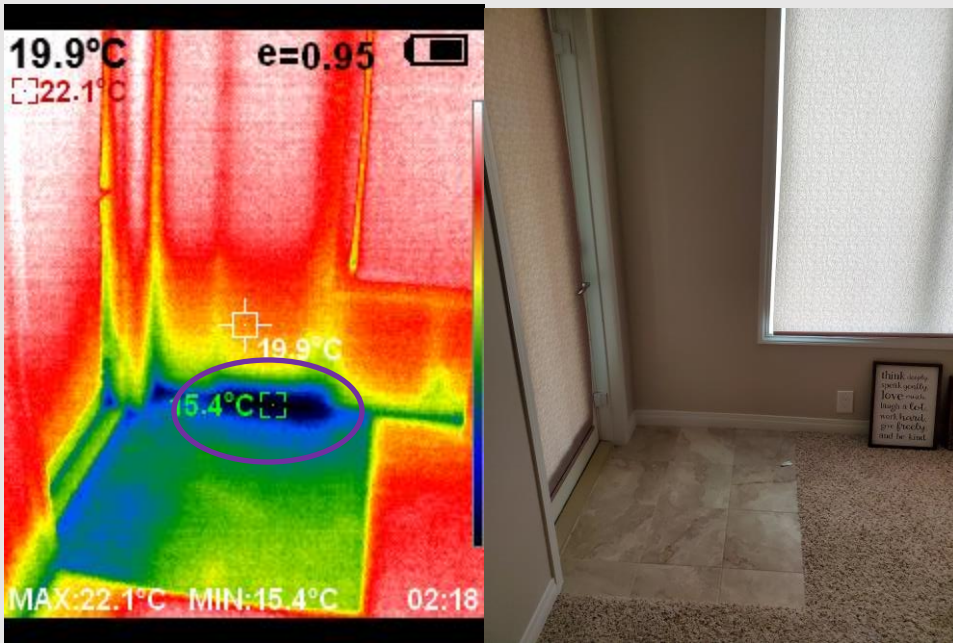
## Infrared Imaging

I like to introduce you to one of the tools that distinguishes the quality of our service. This tool is called infrared thermal imaging or infrared camera. With the inclusion of thermal imaging as superior technology to discover things about the property that may not be seen by naked eyes. At the property, we provide infrared thermal inspection to locate and recognize defects related to moisture, insulation inadequacy, structure defects, electric defects, air infiltration and energy loss locations.

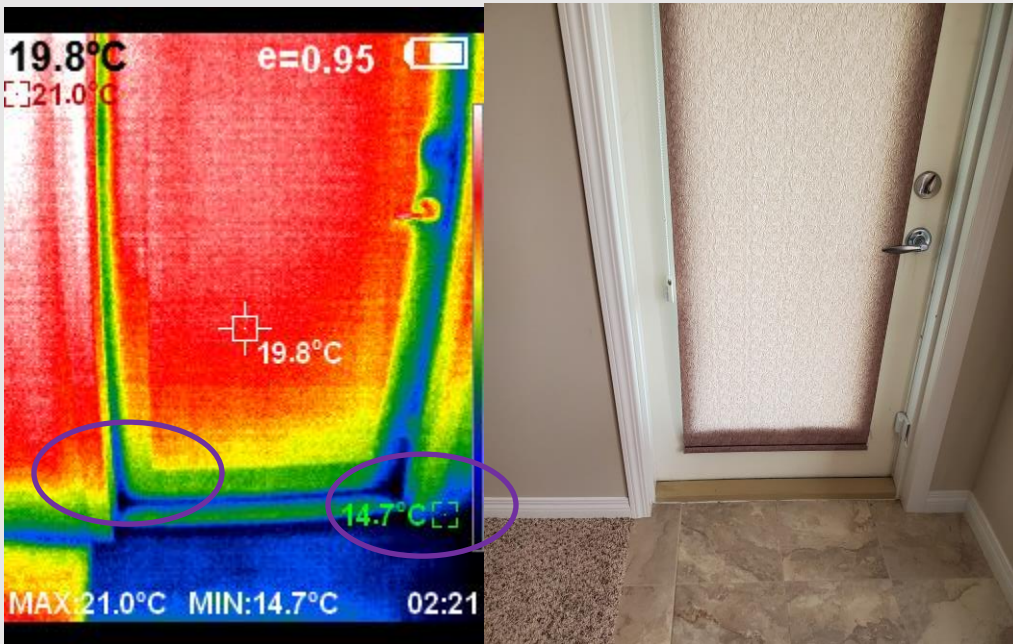
Below are some pictures for you may benefit when you use our service to perform your home inspection.



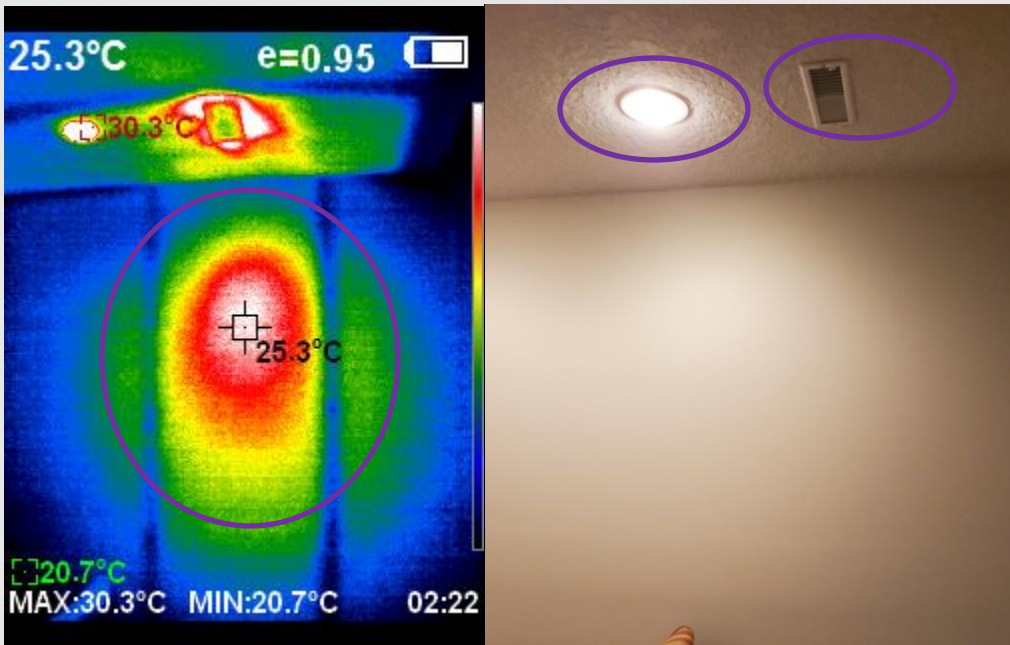
The two photos of a wall. On the left is infrared photo and on the right is the normal camera photo. The infrared photo reveals vertical colored greens lines. These are studs behind the dry wall. It is not possible to see those studs with the normal camera photos, neither with the naked eyes.



These two photos were taken from a workout basement door. The infrared photo is on the left and the normal camera photo on the right. The infrared shows the vertical studs, the cold tiles in green and the dark blue spot at the base of the dry wall. The dark blue coloration is indicative of air infiltration point. Those observations cannot be seen using the normal camera.



These two photos were taken facing the door in the previous diagram. The infrared photo is on the left and the normal camera photo is on the right. On the infrared photo, we can identify the cold tiles. Along the edges of the door, we can identify where we have air infiltration into the basement.



The two photos are of the same dry wall, with the overhead light switched on and we can also see the overhead register on the ceiling. The infrared photo is on the left and the normal camera photo is on the right. On the infrared photo, we can see the wall studs that were used in the construction of the wall frame. We can observed evidence of heat coming out from the register on the ceiling and it's reflection on the dry wall as the wide red, yellow and green coloration.